

# General Plan Advisory Committee Meeting #3

July 15, 2021

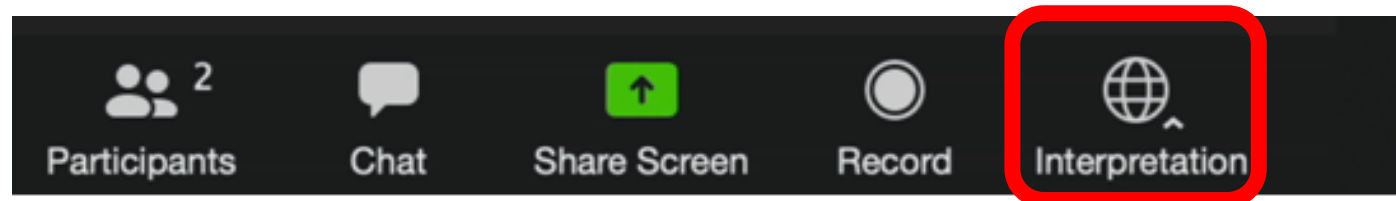
# Zoom – La interpretación

- Interpretation

**La interpretación en simultáneo para esta reunión se dará en los siguientes idiomas:**

Español (Martin y Gustavo) – bajo la opción Español

Por favor haz clic en el icono INTERPRETATION en tu barra de herramientas para acceder al idioma deseado



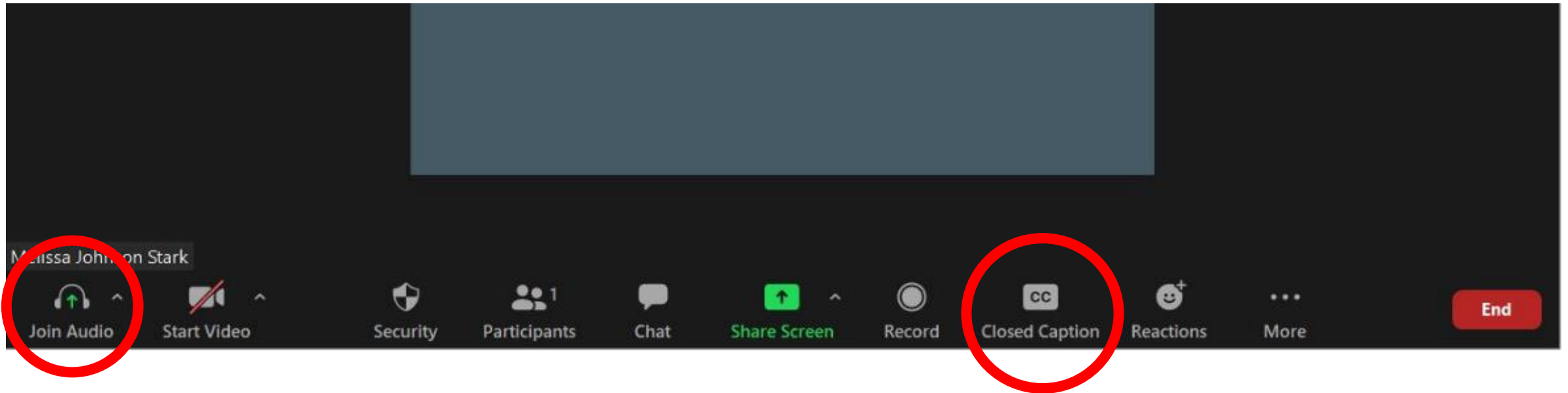
# GPAC Roll Call

- Dave Alden
- Panama Bartholomy
- Stephanie Blake
- Phil Boyle
- Matt Brown
- Erin Chmielewski
- Delia Diaz
- Mary Dooley
- Sierra Downey
- Jessie Feller
- Ali Gaylord
- Yensi Jacobo
- Roger Leventhal
- Iliana Inzunza Madrigal
- Roberto Rosila Mares
- Kris Rebillot
- Bill Rinehart
- John Shribbs
- Joshua Riley Simmons
- Janice Cader Thompson
- Bill Wolpert

# Logistics



# Zoom Instructions

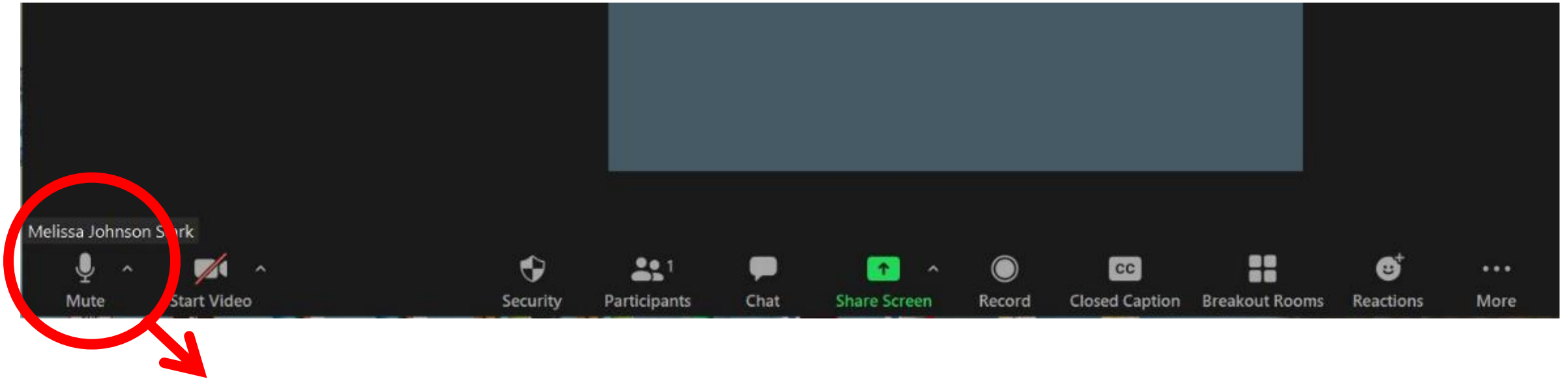


## *Join Audio*

- Two options:
  - *Use your device's audio*
  - *Call in using a cell phone*

## *Close Caption is available*

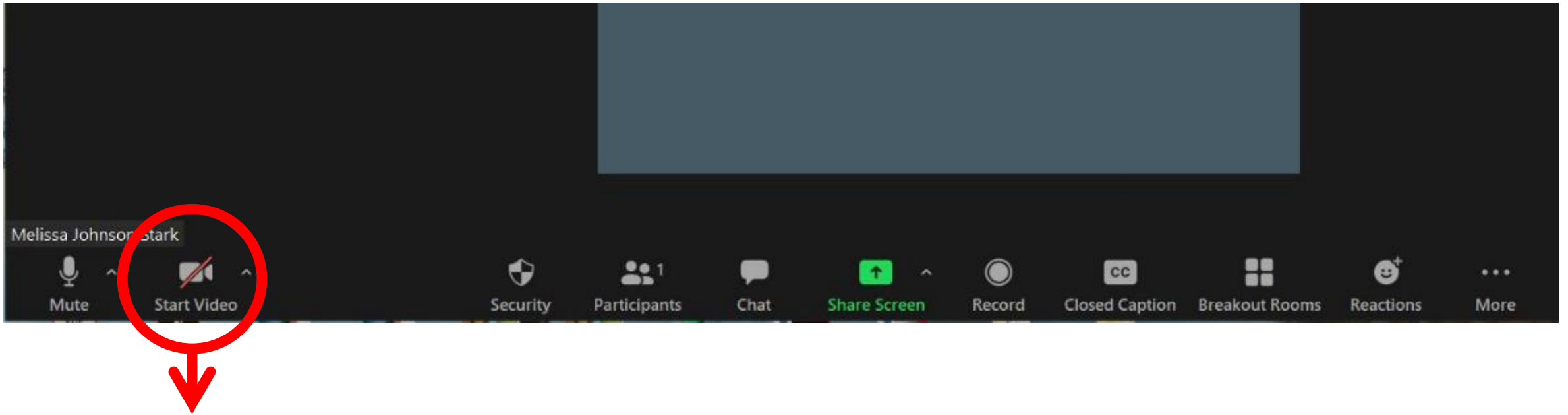
# Zoom Instructions



## ***Once Audio is Connected – Please Mute***

- Please remain muted until it is your turn to speak
- To un-mute, press the same button

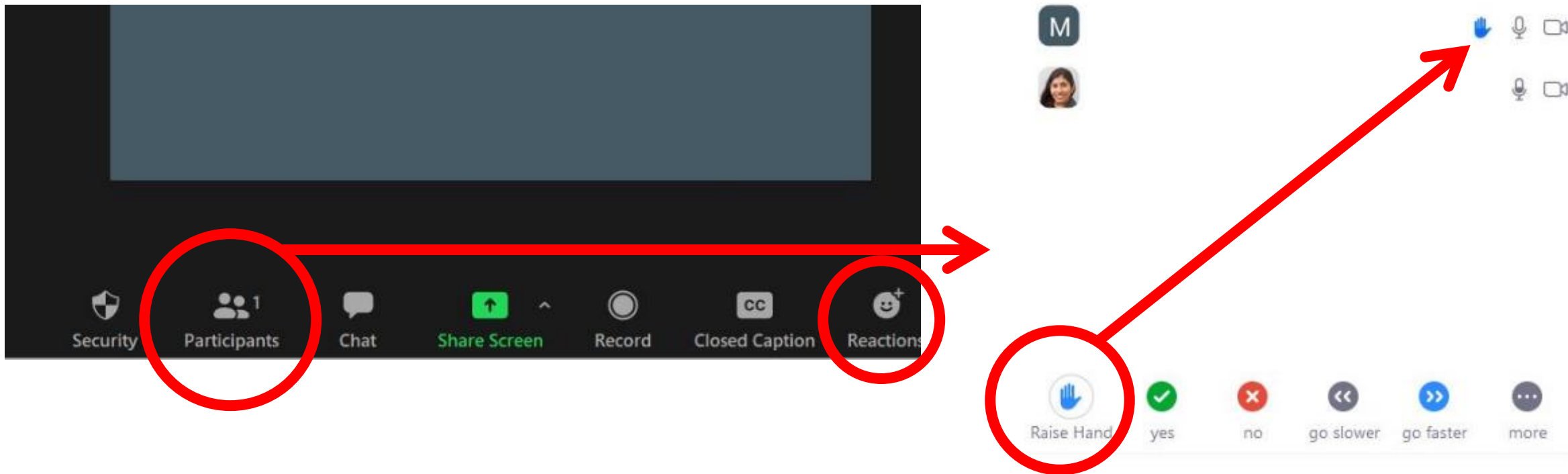
# Zoom Instructions



## *Start Video (GPAC Only)*

- **GPAC:** Please keep your camera on for the duration of the meeting
- **Public:** Please keep your camera off unless speaking during public comment

# Zoom Instructions



## *Raise your “Hand” to Speak*

- Please use the “Raise Hand” feature if you want to speak – the team will call on GPAC members individually. Please remain muted until called on.
- **Public:** Please only raise your hand during public comment. You can also use the **Q+A function** to send the Host questions during the meeting.

# Zoom – What You Need To Know

**For any technical difficulties, please email**  
**[eroberts@cityofpetaluma.org](mailto:eroberts@cityofpetaluma.org)**

**Para cualquier dificultad técnica, envíe un**  
**correo electrónico a**  
**[martin@mrtranslations.org](mailto:martin@mrtranslations.org)**



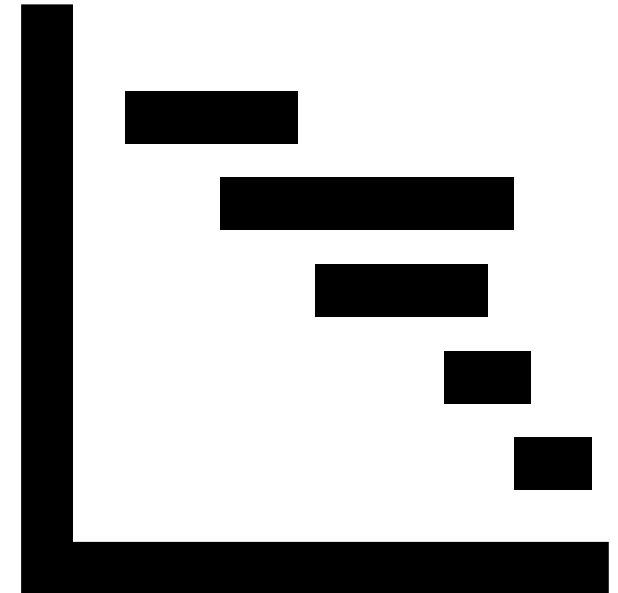
# Meeting Overview

- Roll Call and Meeting Overview
- Public Comments
- Follow-Up since Meeting #2
  - City Sub-Areas
  - City Issues and Opportunities
- Environmental Justice & Equity
- Upcoming Activities and Meetings
- Final GPAC Thoughts



# Building on May and June GPAC Work

- Group Agreements (from May meeting): affirmed as summarized
- Sub-Areas (June input): agenda item 5
- Issues and Opportunities (from listening sessions): agenda item 5
- General Plan Topics (from May meeting and listening sessions): agenda item 7
- GPAC Contributions (from listening sessions): agenda item 7



# Public Comments

# Stay within time please!

00 : 02 : 00

Change Clock Type  
Digital

Duration: 00 02 00

TimeUp Reminder (Optional): -- -- --

Choose Sound Effect Tick

Choose TimeUp Sound Alarm

Enable Count Up  Combine With Bar Clock

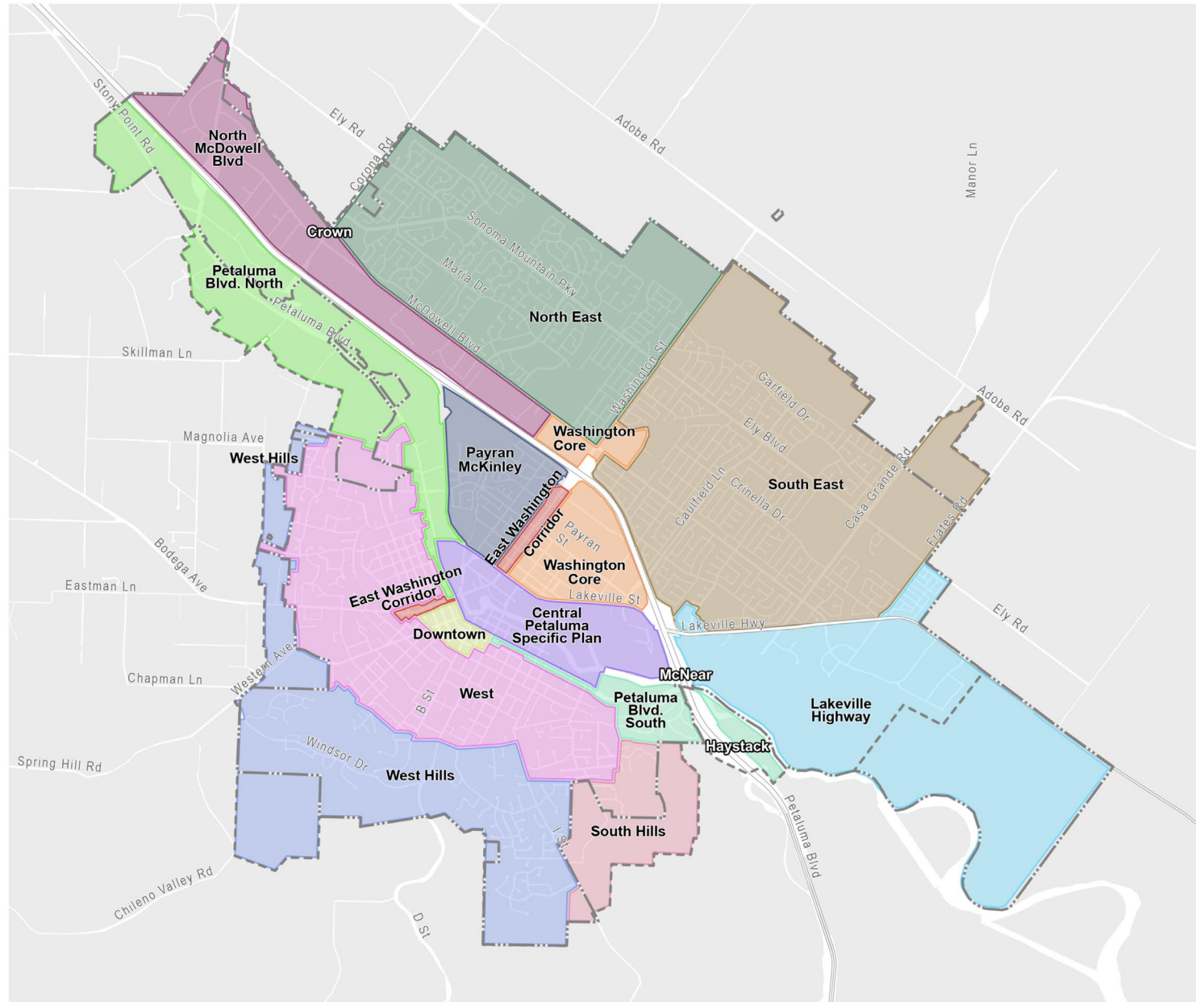
Start Pause Stop

# City Sub-Areas



# Purpose of Sub-Areas

- Cities are not monolithic places
- Recognize/celebrate unique character of different parts of the City
  - Neighborhoods
  - Districts
  - Corridors
- Identify sub-areas based on:
  - Land use and urban form
  - Role in the city
  - Census geography
  - GPAC input



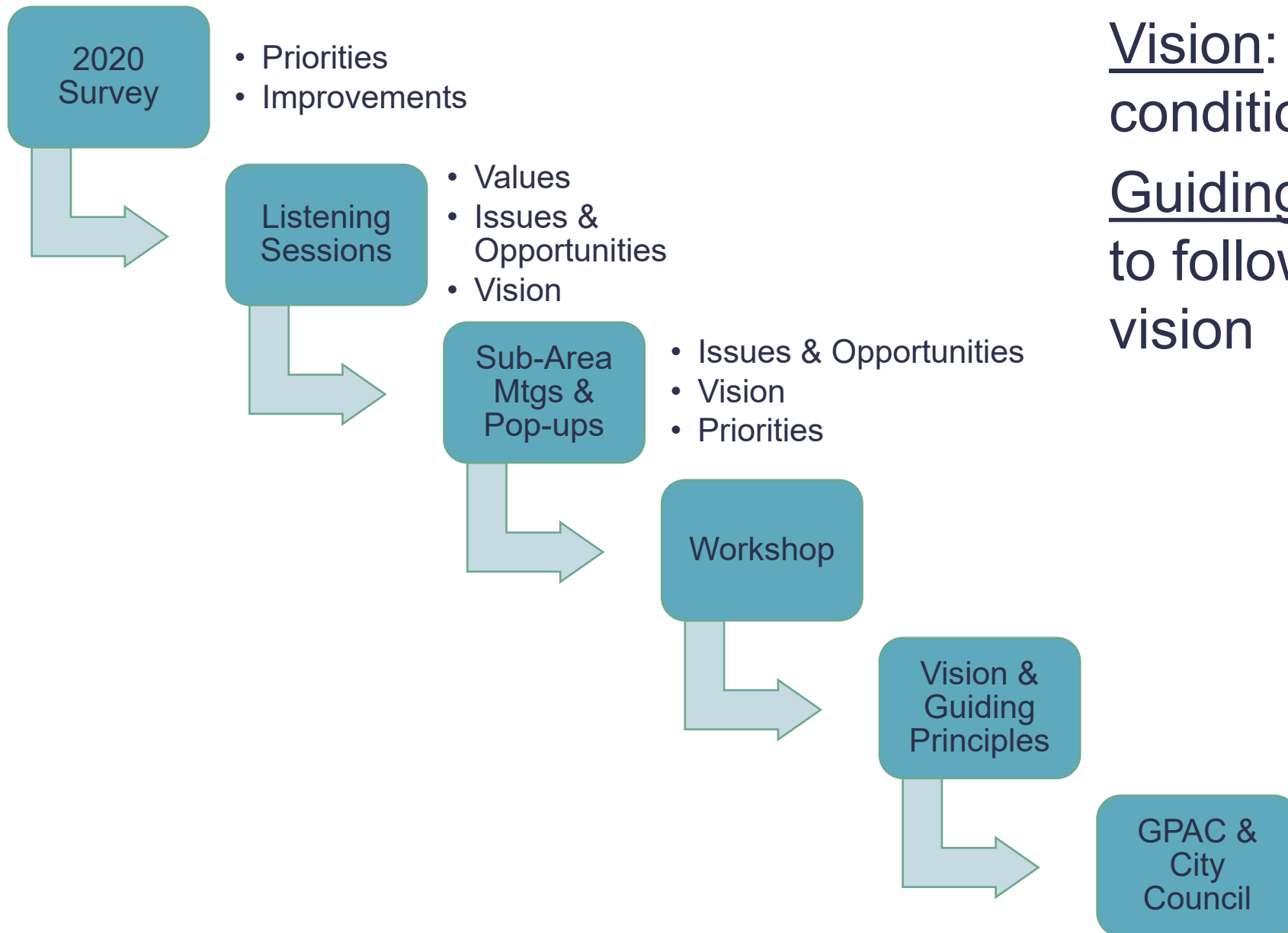


# Next Steps with Sub-Areas



# City Issues and Opportunities

# One of Several Vision Inputs



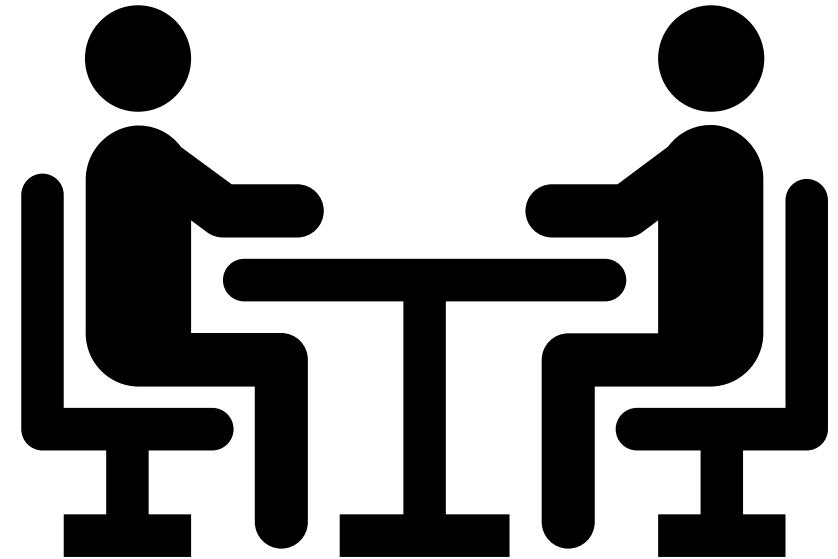
Vision: desired future conditions

Guiding Principles: direction to follow to achieve the vision

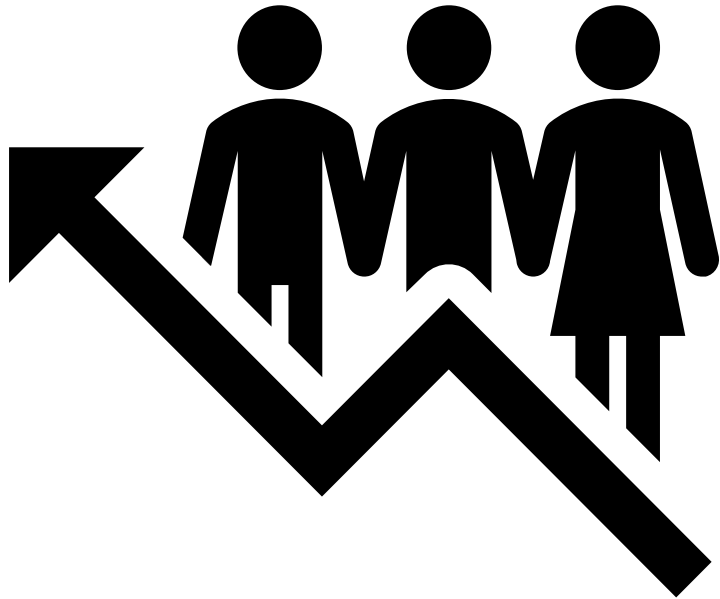


# Listening Sessions: City Council & GPAC

- Purpose:
  - Help the consultant team understand more about the City
  - Inform project direction and engagement strategies
  - Build relationships with City Council and GPAC members
- Supplement but not duplicate previous input provided by the City Council
- Summary will capture key themes



# Listening Session Questions



- Values
- Issues & Opportunities
- Vision
- Engagement
- GPAC: How would you like to contribute?
- Council: How can the City best use the General Plan?

# Drivers of Change

## Issues

- Community cohesion
- Equity
- GHG mitigation
- Climate & hazard resilience
- Mix of land uses
- Housing
- Transportation
- Parks & facilities
- Economic development
- Municipal finance
- Balancing competing priorities

## Opportunities

- Inherent qualities
- Assets from investments
- Conservation
- Equity
- Land use
- Housing element
- Transportation
- Economic development

# Environmental Justice + Equity Overview

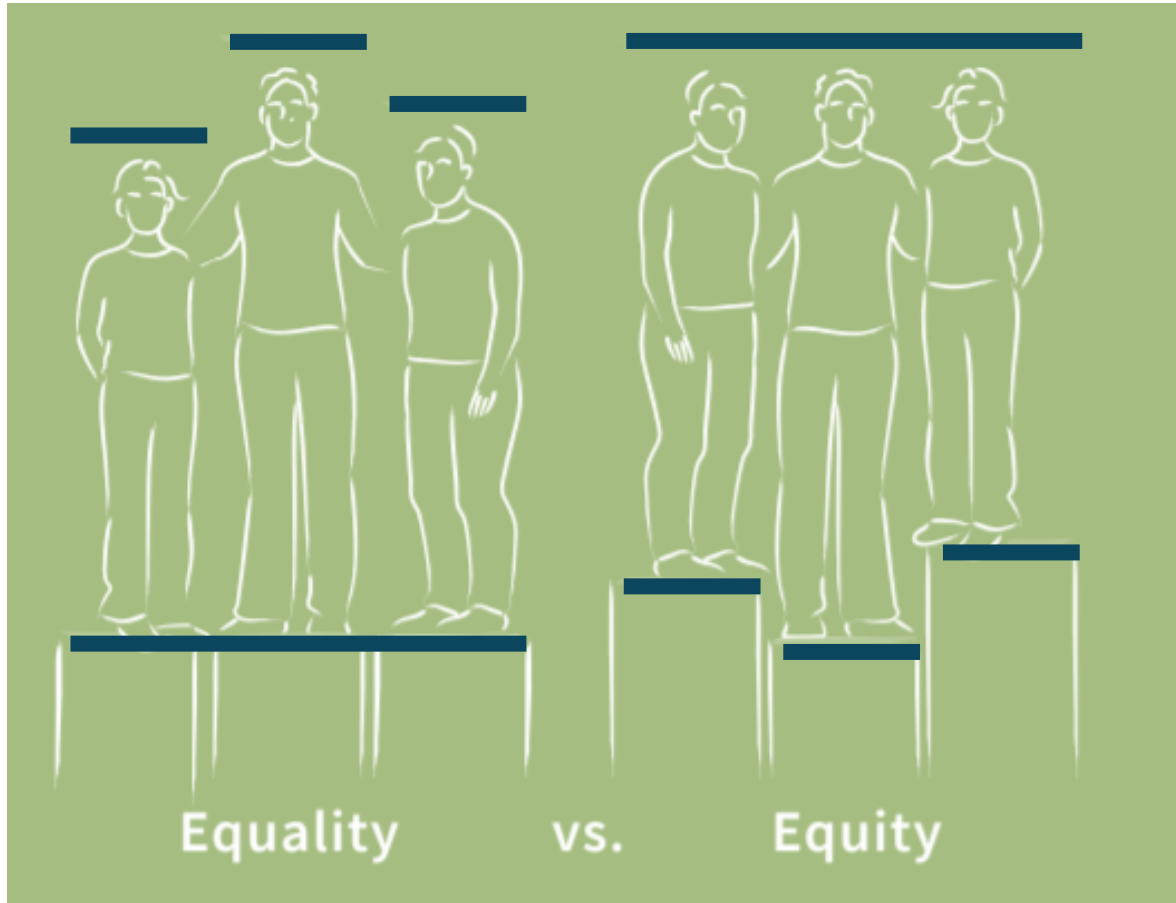
# Overview

- Equity and Environmental Justice
- Senate Bill 1000
- Results from the Health & Environmental Justice Analysis
- Q&A

# Introduction

- This presentation is a high-level summary of the **existing conditions analysis** of health and environmental justice in Petaluma.
  - First step of Senate Bill 1000 and an Environmental Justice Element
  - Identifies potential “disadvantaged communities” in Petaluma
  - Serves as launching point for community engagement and ground-truthing of data
- Feedback provided today will be used to further refine the identification of “disadvantaged communities” as part of the General Plan Update process.

# What is Equity? What is Environmental Justice?



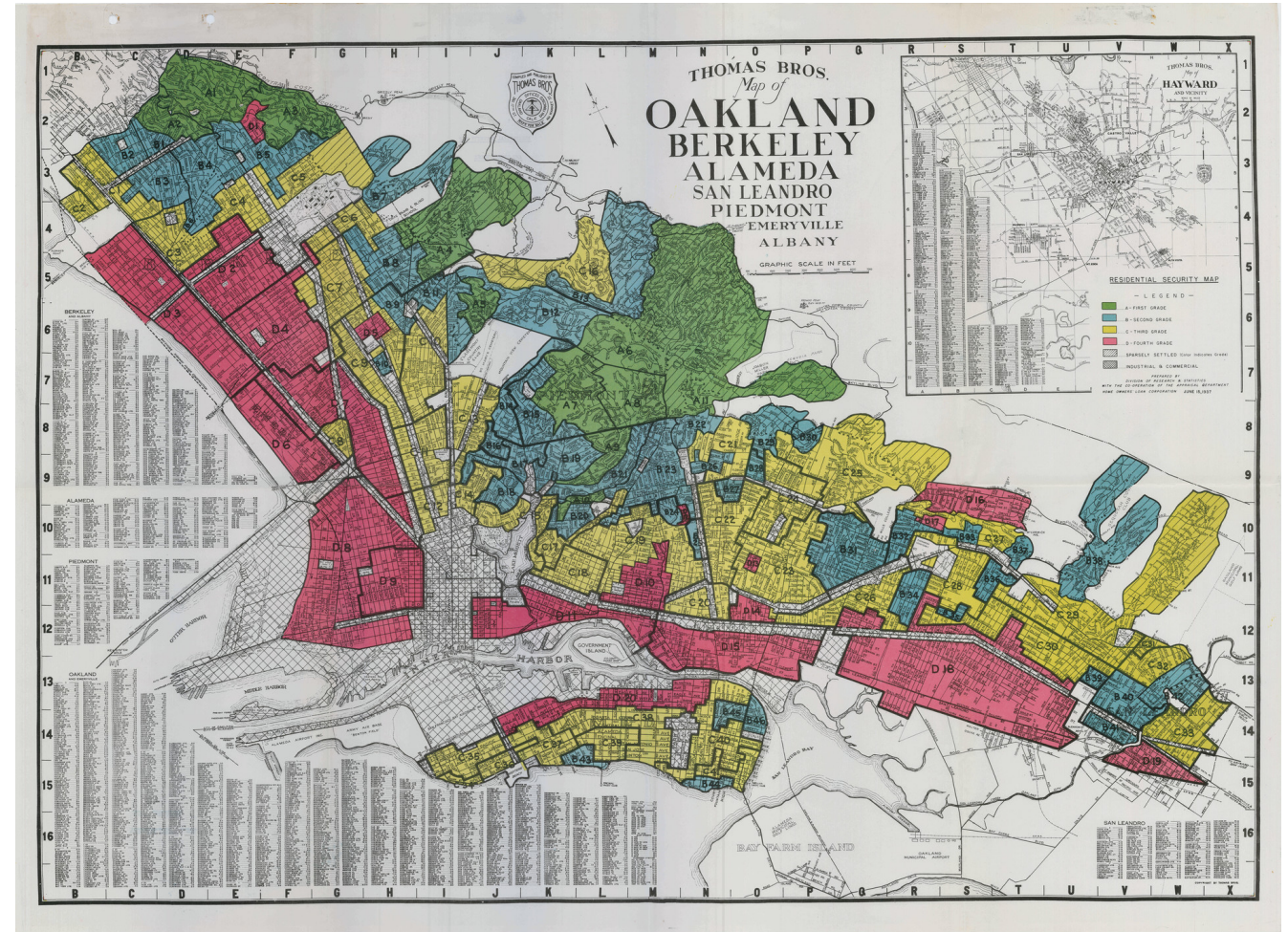
**Equity** is about ensuring that people have access to the same opportunities and have what they need to thrive and succeed.

**Environmental Justice** is “...the fair treatment and meaningful involvement of all people regardless of race, color, national origin, or income, with respect to the development, implementation, and enforcement of environmental laws, regulations, and policies.” (US EPA)



# Examples of Past Planning Inequities

- Siting of noxious facilities
- Redlining
- Single family zoning
- Disproportionate investments in community development



Sources: KQED



# Petaluma's Equity Initiatives

- Black Lives Matter art installation
- Climate Action Framework
- Ad Hoc Community Advisory Committee
- Various Police Department programs
  - Community policing model
  - Mobile crisis intervention team
  - Trainings on de-escalation, implicit bias, and diversity, equity, and inclusion
- Equity will also be woven through the General Plan Update work



Sources: City of Petaluma

# Environmental Justice Element (SB 1000)

- 1. Reduce unique and compounded health risks in disadvantaged communities**
- 2. Promote civic engagement in the public decision-making process**
- 3. Identify objectives and policies that prioritize improvements that address the needs of disadvantaged communities**

Reduce Pollution Exposure, including Air Quality Improvement

Promote Public Facilities

Promote Food Access

Promote Safe and Sanitary Homes

Promote Physical Activity

# SB1000 Process

There are three steps to developing an Environmental Justice (EJ) Element.

Step 1

**Analysis:** Identify disadvantaged communities (DACs), including unique or compounded health risks

Step 2

**Engagement:** Engagement with the community, especially in DACs, on a minimum of five topic areas related to health and environmental justice

Step 3

**Policy Development:** Integration of goals, policies, and programs into the GPU to address DAC priorities



# What is a “Disadvantaged Community”?

According to State law, a “disadvantaged community” (DAC) is defined as: “...a **low-income area that is disproportionately affected by environmental pollution and other hazards** that can lead to negative health effects, exposure, or environmental degradation.”



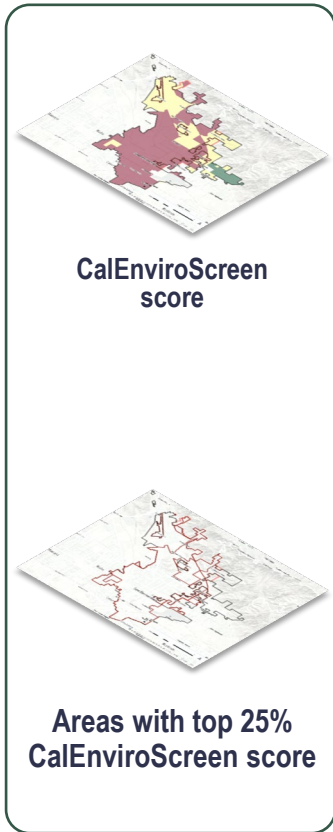
Sources: LA Times



# Disadvantaged Community Screening Analysis

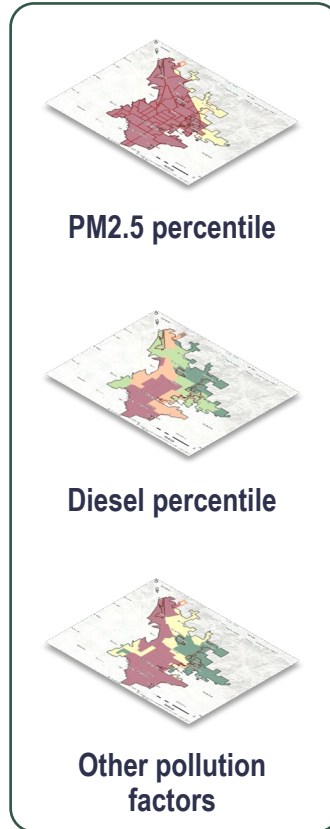
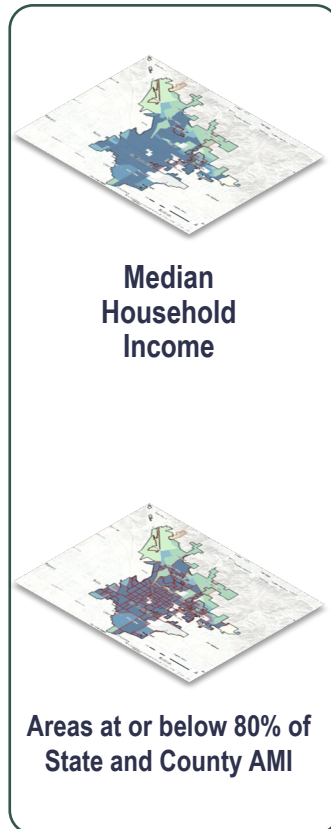
## Method 1

CalEnviroScreen 4.0



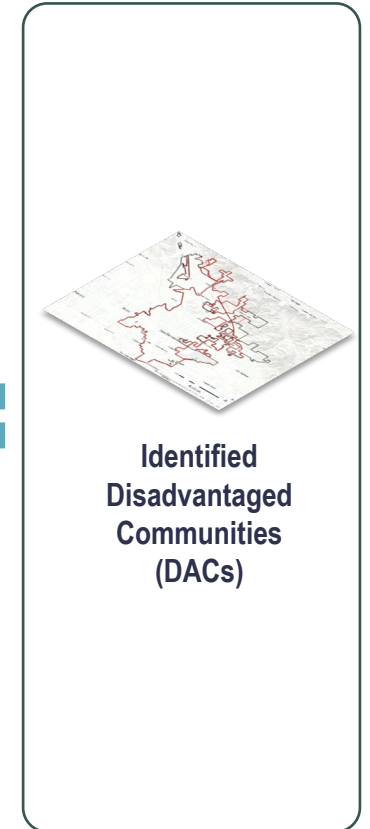
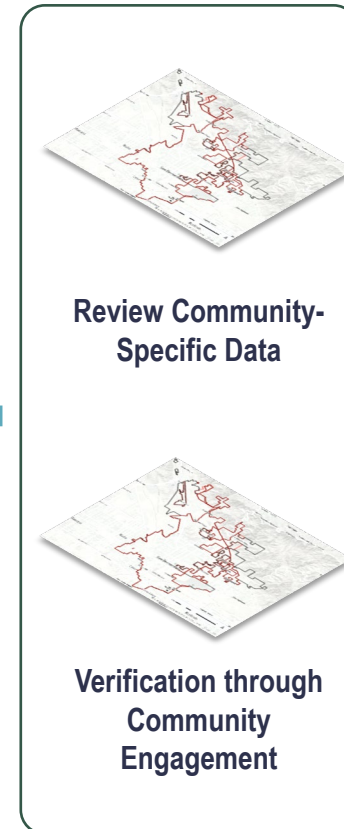
## Method 2

Low-income communities with disproportionate pollution burden



## Method 3

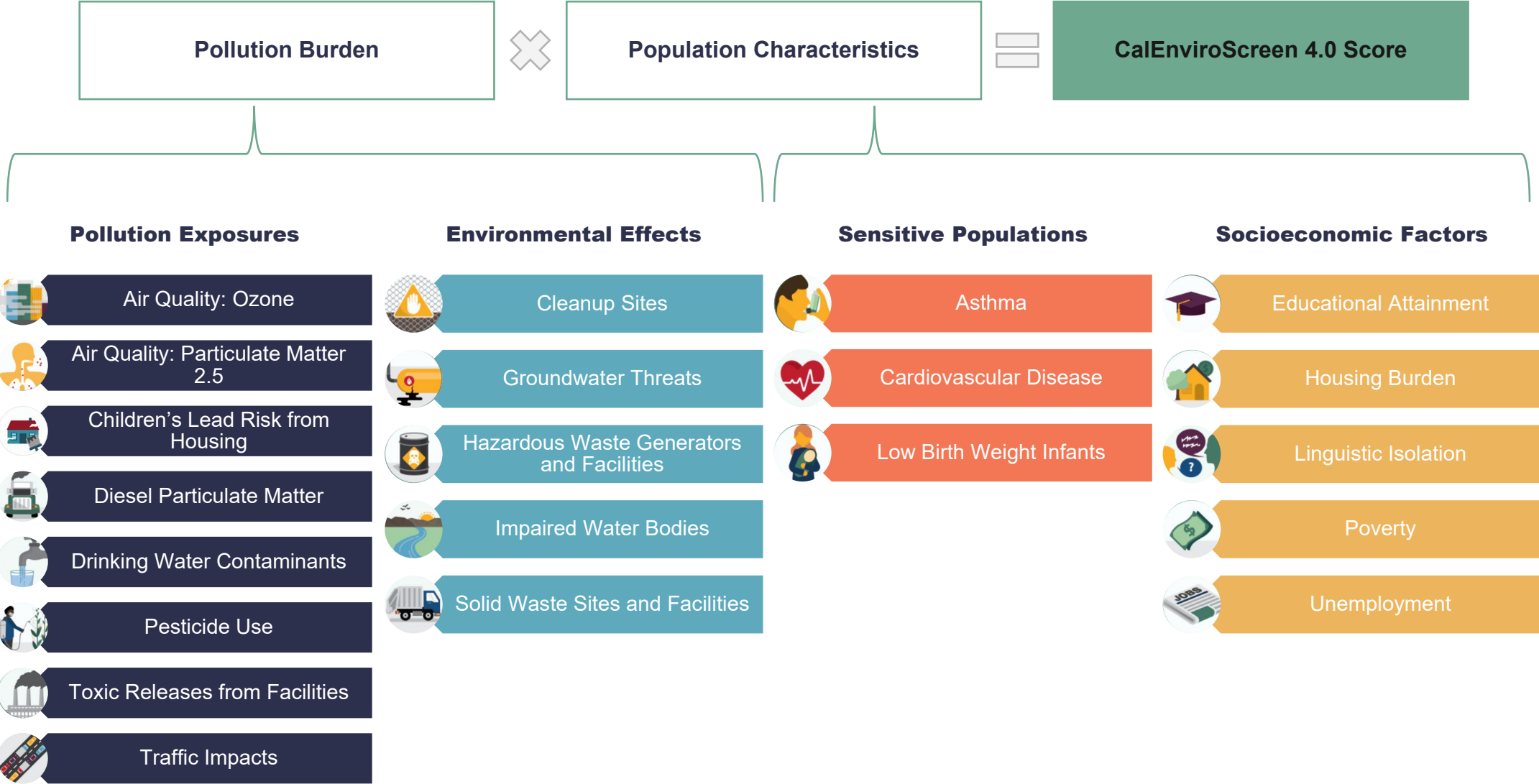
Community-specific data and groundtruthing



# CalEnviroScreen

- An index of data from **several verified sources** of information on **potential pollutant exposures** and environmental effects at the **census tract level**.
- **Potential pollution burden** relative to all census tracts in CA
- Limitations
  - Measures **potential and relative** exposure rather than actual and absolute exposure
  - Certain pollution monitors collect data are at a **regional level** as opposed to local or parcel level
  - Limited information on health because it was designed to prioritize effects, such as asthma, with **known relationships** to air quality pollutants
- **Therefore, need additional input from community members**

# CalEnviroScreen 4.0 Indicators

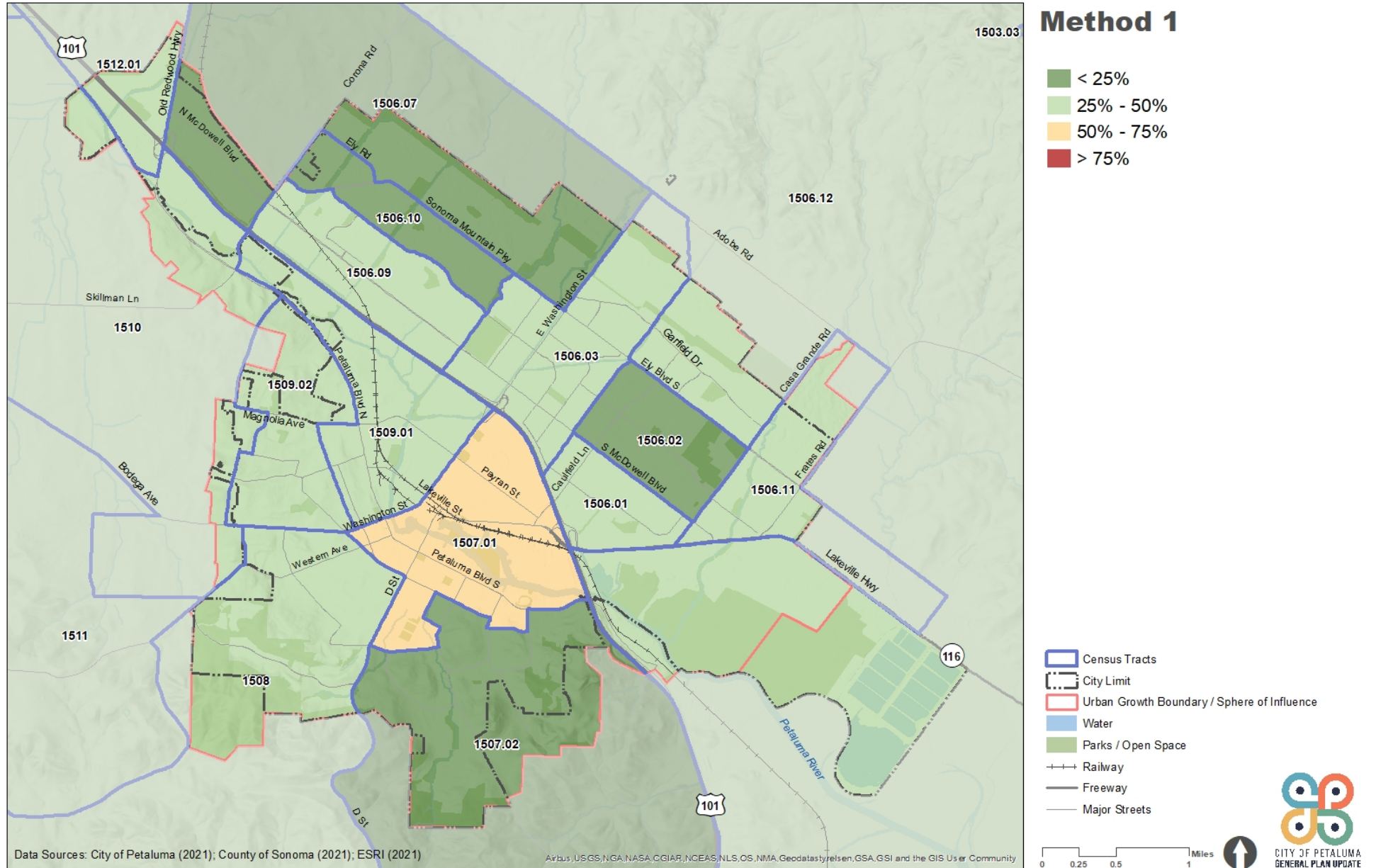


Sources: Raimi + Associates. Graphic Elements adapted from California Office of Environmental Health Hazard Assessment CalEnviroScreen 3.0 Webpage and Report.



# Method 1 Results

No DACs because no census tract has a CES 4.0 Index score at or above the 75<sup>th</sup> percentile.





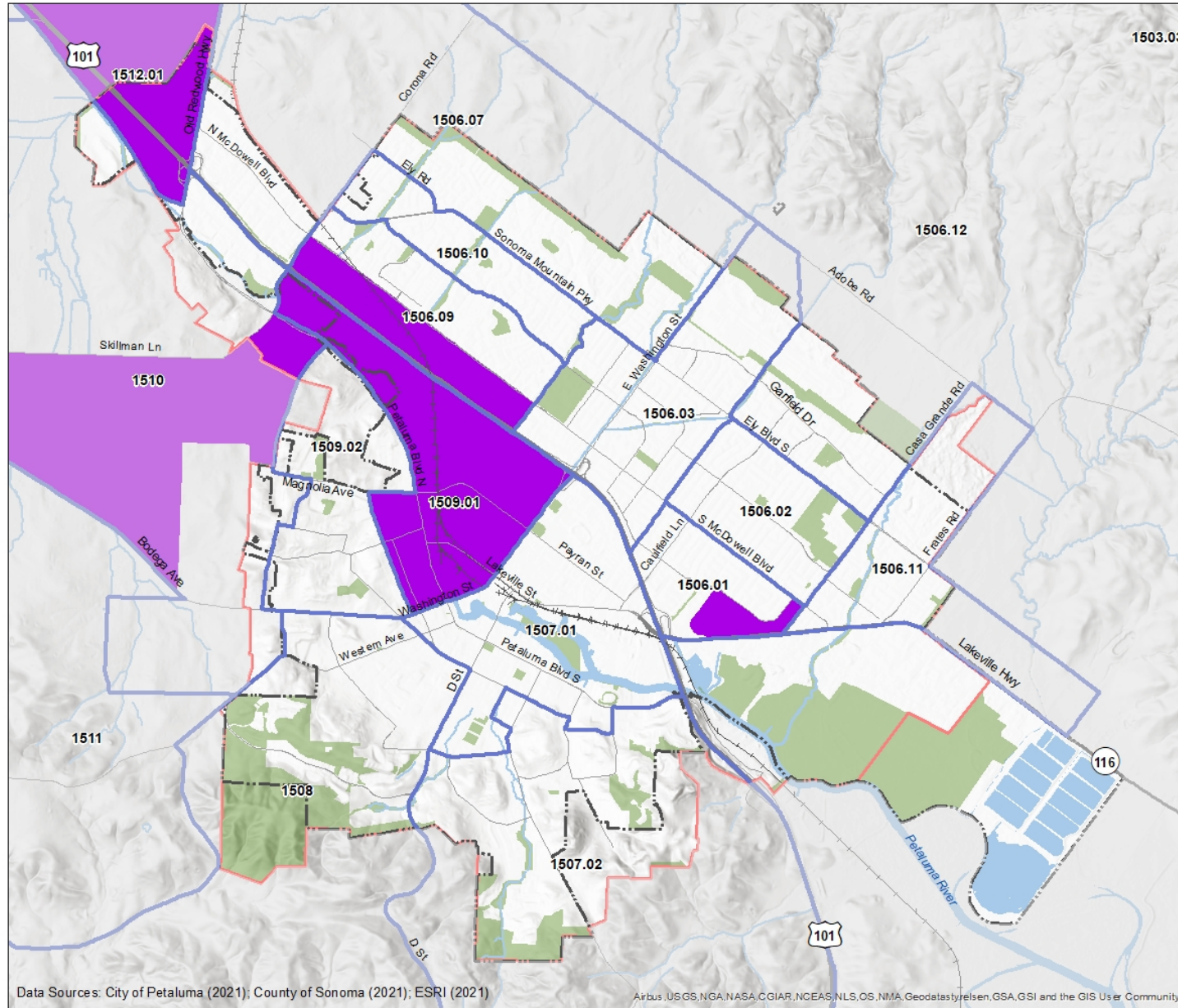
# Method 2 Results

2 low-income census tracts identified as potential DACs

- 1509.01
- 1512.01

3 additional low-income block groups identified as potential DACs.

Associated with following census tracts: 1506.01, 1506.09, & 1510



## Method 2

Potential DAC

Census Tracts  
City Limit  
Urban Growth Boundary / Sphere of Influence  
Water  
Parks / Open Space  
Railway  
Freeway  
Major Streets

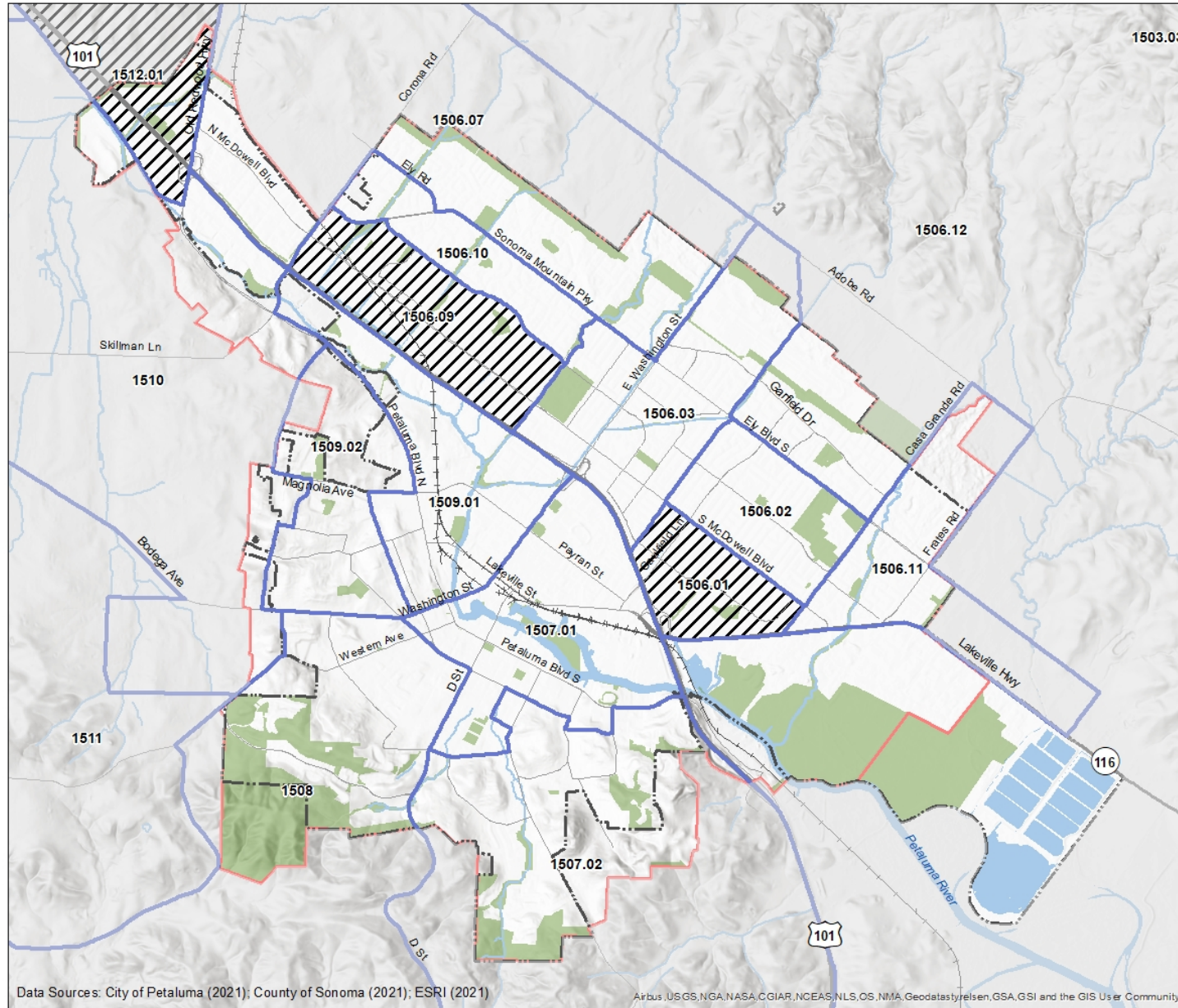


CITY OF PETALUMA  
GENERAL PLAN UPDATE

# Method 3A Results

3 CDC social vulnerability census tracts identified as potential DACs

- 1506.01
- 1506.09
- 1512.01



## Method 3A

/// Potential DAC (High Vulnerability)

- Census Tracts
- ⬜ City Limit
- ▭ Urban Growth Boundary / Sphere of Influence
- Water
- Parks / Open Space
- ⋯ Railway
- Freeway
- Major Streets



# Method 3B Results

## Health Outcomes

- Life expectancy at birth
- Adult asthma rate
- Asthma hospitalization rate
- Adult heart disease rate
- Heart disease hospitalization rate
- Infant low birth weight rate
- Adult obesity rate

## Pollution Exposure

- Proximity to high-volume roadways

## Food Access

- Access to healthy food
- Alcohol availability
- Food insecurity

## Physical Activity

- Adult walking rates
- Active commuting rates

## Public Facilities

- Access to high-quality transit
- Access to parks

## Housing

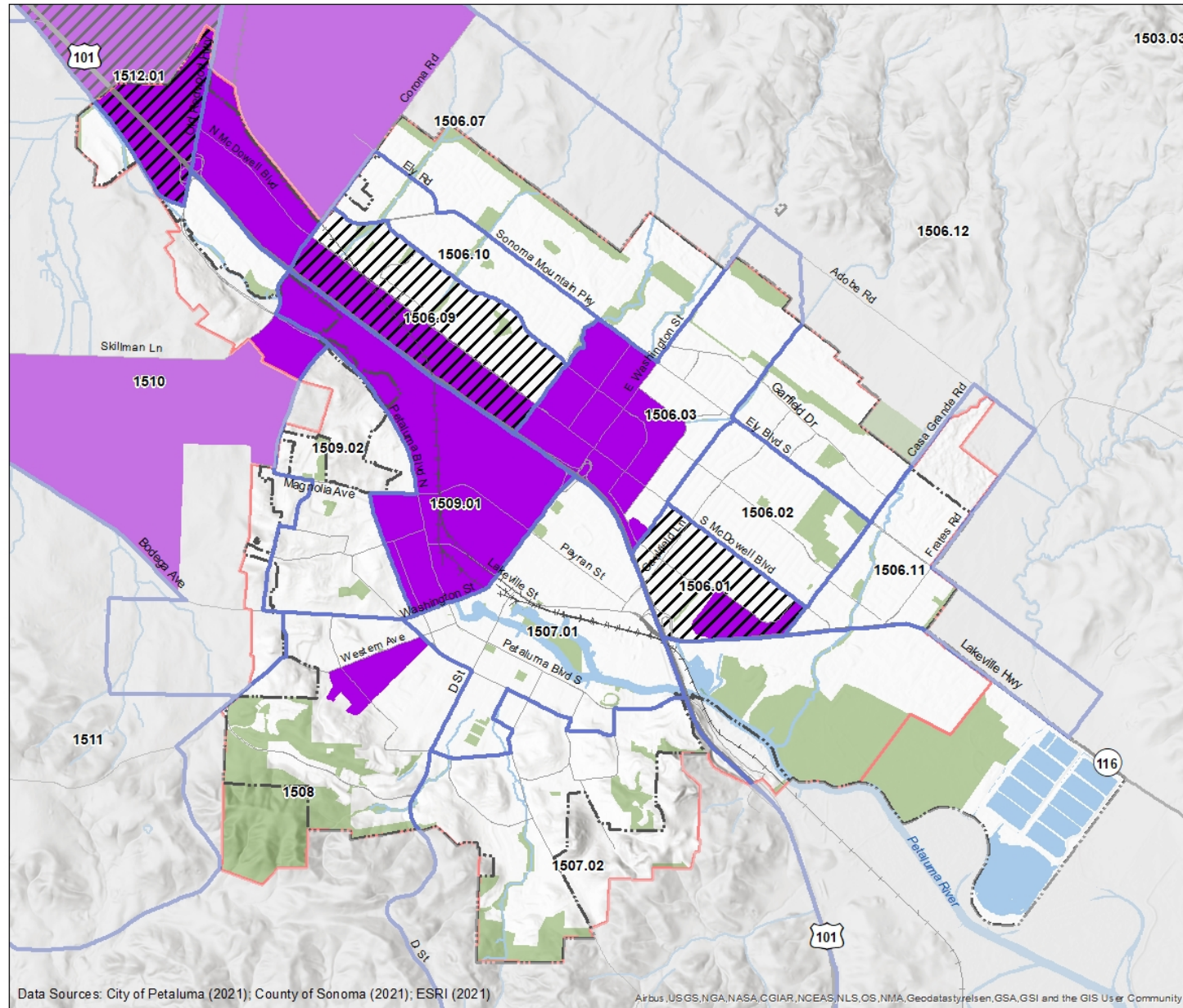
- Cost-burdened households
- Overcrowded households

RED = Disproportionate Burden

# Potential DACs

In total, 8 census tracts identified as potential DACs

- 1506.01
- 1506.03
- 1506.07
- 1506.09
- 1508
- 1509.01
- 1510
- 1512.01



## Potential DACs

- Low-Income Area
- ▨ High Social Vulnerability Area

- Census Tracts
- ▭ City Limit
- ▭ Urban Growth Boundary / Sphere of Influence
- Water
- Parks / Open Space
- +— Railway
- Freeway
- Major Streets

0 0.25 0.5 1 Miles



CITY OF PETALUMA  
GENERAL PLAN UPDATE

Data Sources: City of Petaluma (2021); County of Sonoma (2021); ESRI (2021)

Arbus, USGS, NGA, NASA, CGIAR, NCEAS, NLS, OS, NMA, Geodastyr/elsen, GSA, GSI and the GIS User Community



# Next Steps

- Ground-truth the results of this analysis with GPAC
- Conduct community engagement to:
  - Verify identified potential disadvantaged communities
  - Gather additional qualitative data on health and environmental justice
  - Draft goals, policies, and programs into the GPU to address DAC priorities
- Feedback provided today and in future events will be used to further refine the identification of disadvantaged communities as part of the General Plan Update process.

# GPAC Environmental Justice Discussion Overview

# GPAC Environmental Justice Discussion

1. GPAC Clarifying Questions – *10 min*
2. Small Group Discussion (Break Out Rooms) – *30 min*
  - GPAC split evenly into 3 Small Groups (Spanish Interpretation in Main Room)
  - Members of the public split evenly to observe
3. Report Out from each group on high level themes – *5 min*
4. GPAC Discussion – *10 min*



# GPAC Clarifying Questions?

# Small Group Discussion Questions

- What are Petaluma's citywide health and environmental justice strengths?
- What are Petaluma's citywide health and environmental justice weaknesses?
- What geographic areas may have unique or compounded health risks?
- What City policies or other programs are in place to address these health-related topics?

# Small Group Discussion

# Public Comments

# Stay within time please!

00 : 02 : 00

Change Clock Type  
Digital

Duration: 00 02 00

TimeUp Reminder (Optional): -- -- --

Choose Sound Effect Tick

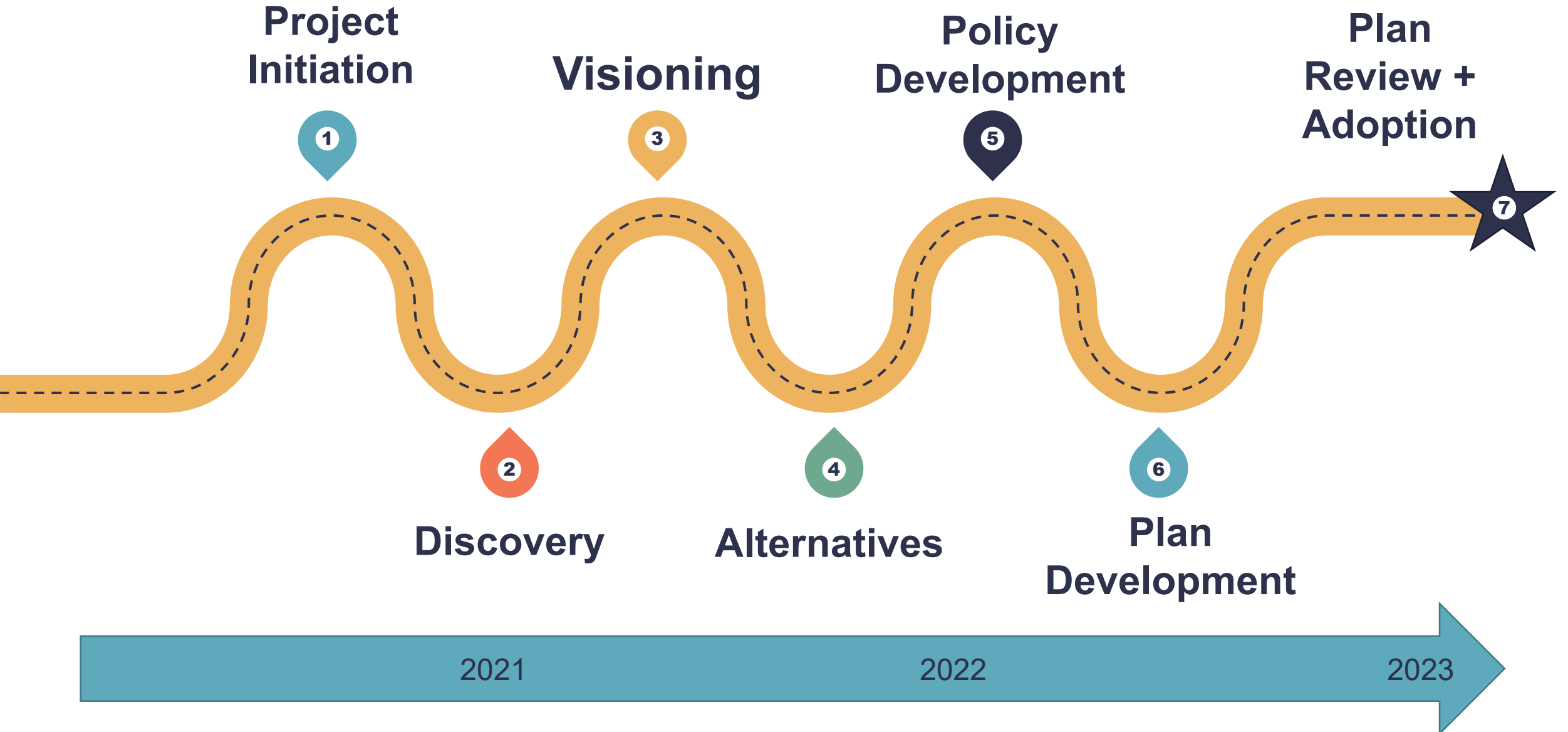
Choose TimeUp Sound Alarm

Enable Count Up  Combine With Bar Clock

Start Pause Stop

# Upcoming Activities & Meetings

# Project Roadmap



# Concurrent (and sequential) Tracks

Discovery: baseline conditions



Visioning: preferred future & principles



Alternatives: land use & density



Housing Element Sites (by ~Spring 2022)



# Discovery Phase Work Products

- **Existing Conditions Reports (ECR) and White Papers** analyze current conditions in the city
- Developed during Summer 2021 and used to inform GPAC topics, Educational Forums, and Vision, Alternatives, and Policies

1. *Demographic and Socioeconomic Report*
2. *Environmental Justice Report*
3. *Environmental Background Report*
4. *Sea Level Rise and Climate Change White Paper*
5. *Market Demand and Economic Opportunity Analysis*
6. *Future of Retail White Paper*
7. *Arts and Culture Background Report*
8. *Historic and Cultural Resources*
9. *Preliminary Housing Sites Inventory*
10. *Existing Conditions Report: integration of white paper findings plus land use and parks*

# GPAC and Community Engagement (2021)

	GPAC	Public
June	<ul style="list-style-type: none"> <li>Sub-areas</li> </ul>	<ul style="list-style-type: none"> <li>Listening sessions</li> </ul>
July	<ul style="list-style-type: none"> <li>Environmental justice and equity</li> </ul>	<ul style="list-style-type: none"> <li>Planning 101</li> <li>Committee/Commission meetings</li> </ul>
August	<ul style="list-style-type: none"> <li>Areas of change</li> </ul>	<ul style="list-style-type: none"> <li>Sub-area meetings (vision) &amp; Pop-ups</li> <li>Committee/Commission meetings</li> </ul>
September	<ul style="list-style-type: none"> <li>Land use/design</li> <li>Existing conditions insights</li> </ul>	<ul style="list-style-type: none"> <li>Sub-area meetings (vision) &amp; Pop-ups</li> <li>Visioning Workshop</li> <li>Committee/Commission meetings</li> </ul>
October	<ul style="list-style-type: none"> <li>Review draft vision and guiding principles</li> <li>Existing conditions insights</li> </ul>	<ul style="list-style-type: none"> <li>Educational Forums</li> <li>Committee/Commission meetings</li> </ul>
November	<ul style="list-style-type: none"> <li>Feedback to Council on vision and guiding principles</li> <li>Develop alternatives concepts (“what if” scenarios)</li> </ul>	<ul style="list-style-type: none"> <li>Sub-area meetings (alternatives)</li> <li>Survey (growth preferences)</li> <li>Educational Forums</li> </ul>
December	<ul style="list-style-type: none"> <li>tbd</li> </ul>	<ul style="list-style-type: none"> <li>tbd</li> </ul>

Note: Estimated timing and relative flow of activities. Subject to change.

# GPAC Topics (from May & listening sessions)

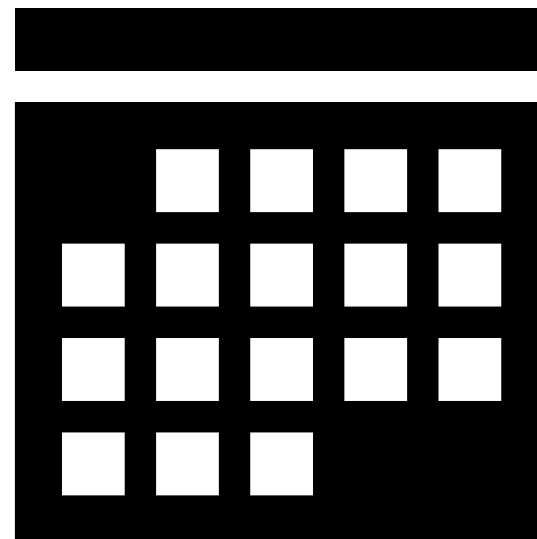
- **Social & Racial Justice:** GPAC meeting; Educational Forum; Environmental Justice, Urban Design, & Transportation Elements
- **Climate Change, Sustainability & Resilience:** Educational Forum; Climate Change Workshops; CAAP & Safety Element
- **Land Use, Design, & Historic Preservation:** GPAC meeting; Alternatives; Land Use, Urban Design, & Historic Preservation Elements
- **Housing:** Housing Element 101 Workshop; Housing Element
- **Active Transportation & Parking:** Transportation & Land Use ECRs and Elements; Educational Forum; Bicycle & Pedestrian Master Plan
- **Watershed & Water Systems:** SLR & Climate Change White Paper; Circulation & Safety Elements
- **Open Space, Trees, Parks & Recreation:** Parks & Rec ECR; Alternatives; Conservation & Open Space Elements
- **Economy:** Market & Retail White Papers; Educational Forum; Economic Development Element
- **Systems, Policy & Implementation:** Policy Framework; Draft General Plan; Digital Plan
- Examples of topics not explicitly addressed in the General Plan: history, food and fiber sheds, law enforcement, childcare

# GPAC Experience, Interests, & Contributions

- Active: parents, coaches, mentors, cyclists, organizers, etc.
  - Historical context
  - Nonprofits and local & state government
  - City boards, Planning Commission, & last GPU
  - Land use and urban design
  - Architecture & engineering
  - Fair housing & tenants rights
  - Ecology & environment
  - Climate, hazard mitigation & resilience
  - Equity & inclusion
  - Health, aging, & universal design
  - Systems perspective
  - Fresh eyes
- 
- Prepare historical synopsis
  - Contribute to General Plan online library (e.g., webinars, articles)
  - Outreach & publicity
  - Engage networks
  - Host GPU activities/roadshow
  - Facilitate

# Near-term Considerations

- Planning 101 timing: would 4:30-6:00pm work?
- Will be reaching out for Pop-Up assistance
- August 19 GPAC Meeting



# Final GPAC Thoughts



# General Plan Advisory Committee Meeting #3

July 15, 2021